



## Ride Your Own Story

Veterans Memorial Park, Marion, MI

July 15 – 19, 2020

Our 31<sup>st</sup> Annual Tour is our fourth year of the Hub and Spokes format and will be held in Marion, MI, known for its artesian wells and Historic Mill Pond. Marion is located in north central Michigan, 15 miles southeast of Cadillac.

- July 15 to 19 – Wednesday to Sunday
- Tuesday early check-in, at no additional charge
- Marion, MI—Veterans Memorial Park Campground
- We have rented the whole campground
- Near White Pine and Pere Marquette trails
- 25 – 70 miles per day
- Hub & Spokes format
- Roads, Routes & Maps
- Drive and Ride
- Ride Your Own Story
- Camping
- Breakfast and Supper
- SAG
- Maps
- Mechanic



The 2020 SummerTour will be held at Marion's Veterans Memorial Park. This is not a repeat but a sequel to 2018. Road routes will leave from the campground and go out in different directions each day. We are working some new routes and changes from the 2018 routes.

Bicycle fabulous drive-and-ride opportunities on the White Pine and Pere Marquette rail trails. Drive your car to trailheads then ride your bicycle on the trail. If you like dirt trails, drive to the Cadillac Pathways.

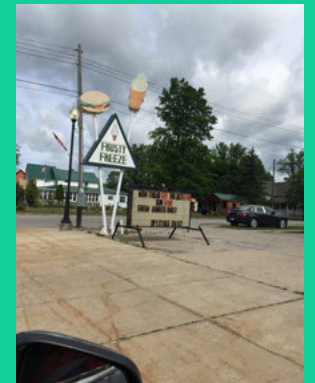
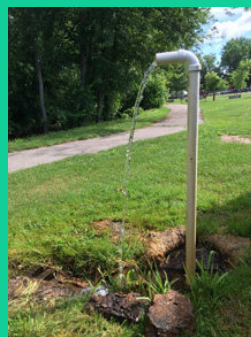
Or "ride your own story." Grab your county maps and make your own routes on paved, gravel and seasonal roads.

Every day starts and ends in Marion. Set up your tent once. No baggage shuttle and daily sprints to the next campground.





Marion is known for its artesian wells.  
Two are located right in the campground.



SummerTour will have an experienced mechanic with a full inventory of parts and accessories. He'll charge a reasonable amount for parts and none for labor.



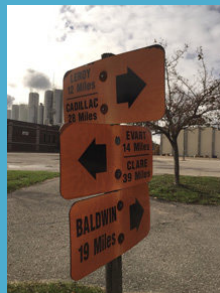
SummerTour has full SAG service. Drivers are always a phone call away. First attention will go to irreparable breakdowns to bicyclists or bicycles. After those, we'll retrieve those who are tired or lost. SAG service ends at 4 PM Wednesday through Saturday and at Noon on Sunday.



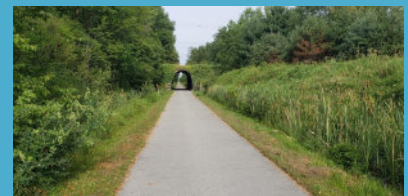
- Cadillac, Reed City, and Big Rapids on the Fred Meijer White Pine Trail.
- Baldwin, Reed City, Evart, even Clare on the Pere Marquette State Trail.
- Ride the paved roads from the campground through Amish farmland area.
- It's all up to you, how short or long you feel like riding.
- Stop at the Frosty Freeze, eat at Ronnie's Lunch Box or the Horseshoe Bar.
- Drink fresh artesian well water right in the campground.



The White Pine Trail & Pere Marquette Trail are close by.



**SummerTour is family friendly.**  
Activities will be planned for evenings in the campground.



## Planning for SummerTour

- Ride SummerTour only if you are capable of completing the distance you plan.
- A bicycle with at least ten gears is highly recommended.
- Have your bicycle in good condition and suitable for long-distance touring.
- You should be able to make your own minor repairs.
- Carry one or more water bottles on your bicycle.
- Be prepared to buy your own lunch each day during the tour.
- Pack for any weather conditions that may occur.
- Bring your road bike and/or your trail bike. The Pere Marquette & Hart-Montague trails are paved. The Cadillac Pathways are not.
- SummerTour is open to all capable and interested bicyclists. You need not be a member of any organization.
- The first 160 entries will be accepted. There is no waiting list.
- All participants under the age of 18 must have a waiver signed by a parent or legal guardian at the time of rider check-in.
- NO applications will be accepted once the ride is full or after June 10, 2020.

## Services Included in Fee:

Included in the basic fee of \$225 are your route maps, tent camping privileges for 5 nights (Tuesday through Saturday), evening meals (Wednesday through Saturday), morning meals (Thursday through Sunday), showers, SAG service, and long-term parking within the campground in a designated area for **registered participants only**.

We will be using the same caterer as last year, Golden Crown. People mentioned they would come on the tour just for the food, it is so good. Regular menu with vegetarian options.

Also, for the 4<sup>th</sup> year, reduced fees for children. The cost is \$100 for 13-17 years of age (as of July 15). They must be accompanied by a registered riding adult. New this year--children 12 and under can ride for free with their registered riding adult.

## Recreational Vehicle Option:

For riders bringing their RV for camping there will be:

- 4 full hook-up sites available for an additional \$75
- 10 partial hook-up sites for an additional \$50
- 15 self-contained (**no electricity, water or sewer**) sites for an additional \$25 at registration.

All persons staying in RVs brought to SummerTour will be registered with SummerTour and pay the registration fee, otherwise they will be asked to leave.

## T-shirt option:

A 50%/50% cotton-polyester dry blend yellow T-shirt is available for purchase at time of registration for an additional cost.

- Men's & Women's sizes (\$21.00)
- Youth sizes (\$11.00)



## SummerTour hat option \$20.00:



It's so relaxing at the campground

## Jersey Options:

Available for purchase at the time of registration for an additional cost.

FloraVelo Jersey made especially for women

- TCBA members: \$60.00
- Non-members: \$70.00
- See last page for sizing information



Primal Jerseys – both Men's and Women's cut

- TCBA Members: \$50.00
- Non-members: \$60.00
- See last page for sizing information



## Application – Registration begins at 4 P.M., January 4, 2020

- Online registration powered by Club Express
- Click “Register Now ”at [biketcba.org/summertour](http://biketcba.org/summertour)
- You will receive an email confirmation.

Refund requests received on or before Wednesday, June 10, 2020 will incur a \$30 charge.

NO refunds will be issued after June 10. Make refund requests in writing: either email or U.S. post.

Questions?

Email:  
[SummerTour@BikeTCBA.org](mailto:SummerTour@BikeTCBA.org)

U.S. Post:  
SummerTour  
P.O. Box 22146  
Lansing MI 48909-2146

Phone:  
734-330-2283



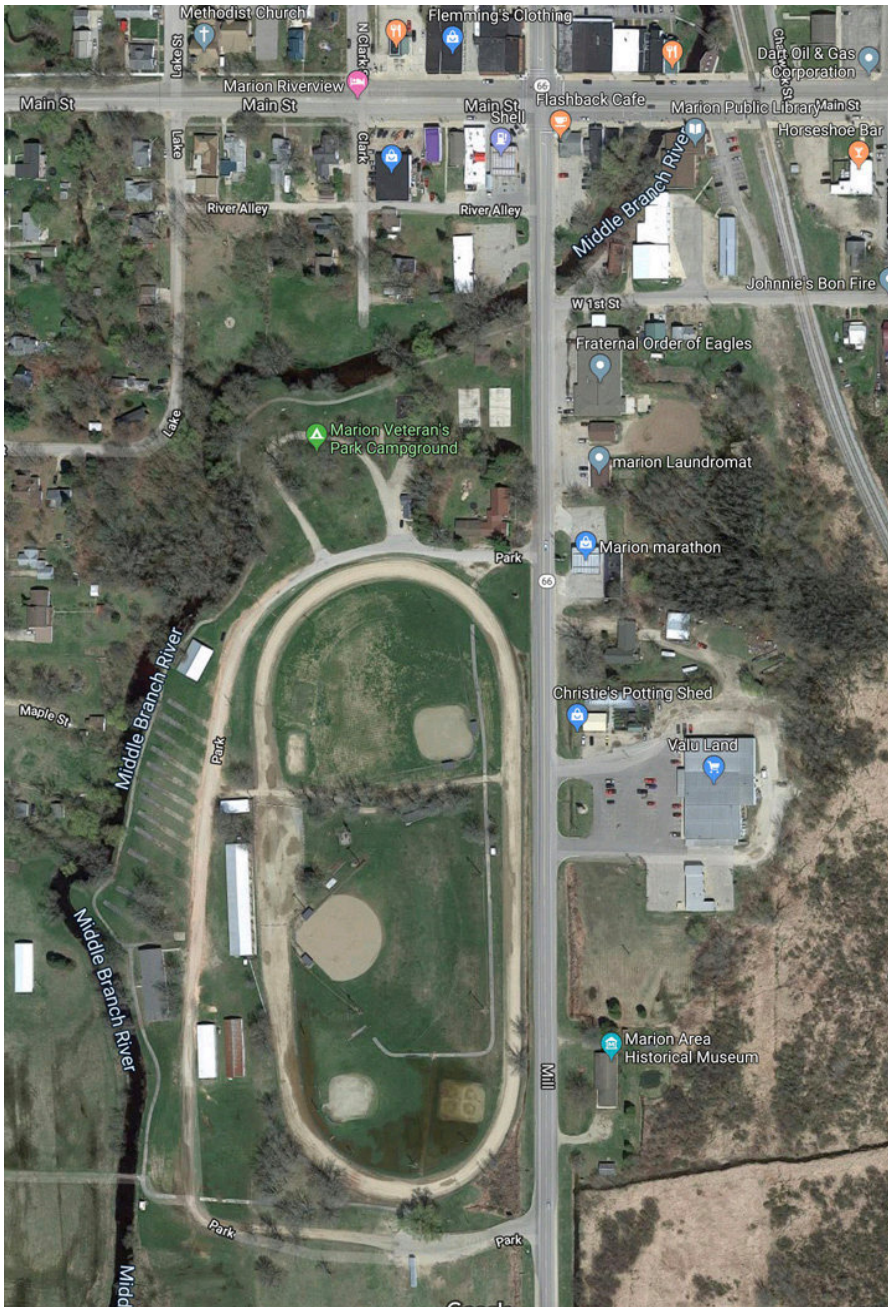
Early check-in time on Tuesday, July 14, 2020 is **4:00 p.m. - 7:00 p.m.** at the pavilion. Follow the SummerTour flags.

Wednesday registration check-in begins at 7:00 a.m.

If arrival is after 9:00 a.m. Wednesday, please check in with our campground hosts

You are on your own for food until Wednesday dinner. Afterwards dinners and breakfasts will be catered through Sunday breakfast.





Veteran's Memorial Park Campground  
226 S. Mill Street  
Marion, Michigan

## For your safety

- Ride SummerTour safely, courteously, and intelligently.
- Riders must wear a Consumer Product Safety Commission (CPSC) approved helmet at all times during the tour.
- The use of earphone devices while riding is prohibited.

## Private Support Vehicles

- Non-riders are welcome, but full fee is required. All private vehicles must be registered with the tour. There will be NO parking on SummerTour campsites, only in the designated area. Overnight facilities are for registered participants only.
- No provisions will be made for non-registered visitors.

It's going to be a wonderful SummerTour.  
We look forward to seeing you in July.

## Primal Jerseys



Primal apparel is engineered for the highest possible performance. To take full advantage of the technical properties of your Primal apparel, it should fit close to the body so that moisture is effectively transported away from the skin to help keep you cool and dry.

**FOR A LOOSER FITTING JERSEY, PLEASE ORDER ONE SIZE UP FROM THE SIZE SHOWN IN THE SIZE CHART.**

Colors may vary slightly based on your viewing device. If you wish to make specific color choices, please provide color-coded Pantone® color swatches with our text to match them. We cannot guarantee the color of the printed jersey will match the color of the printed Pantone® color swatches. All artwork, logos and markings created by Primal Wear, Inc. are the property of Primal Wear, Inc. and are used under license. All other artwork, logos and markings are the property of their respective owners. Please respect all other trademarks. All other artwork, logos and markings are the property of their respective owners. © 2014 Primal Wear, Inc.

### Men's Jersey Sizing

Size	Waist	Chest	Weight	Height
XS	26-29"	33-35"	100-120	Up to 64"
SM	29-32"	35-38"	120-145	64-68"
MD	32-35"	39-41"	145-165	66-70"
LG	35-38"	42-43"	165-180	68-72"
XL	38-42"	44-46"	180-210	70-76"
2X	42-46"	47-49"	210-240	74"+
3X	46-51"	50-52"	240-260	74"+
4X	51-54"	52-55"	260-280	74"+
5X	54"+	55"+	280+	74"+

### Women's Jersey Sizing

Size	Waist	Hips	Weight	Height	Chest
XXS	<24"	<34"	85-100	Up to 62"	<32"
XS	24-25"	34-35"	90-110	Up to 62"	32-33"
SM	25-27"	35-37"	105-120	61-65"	33-35"
MD	27-29"	37-39"	120-145	64-68"	35-37"
LG	29-32"	39-42"	145-165	67-71"	37-40"
XL	32-35"	42-45"	160-185	70-73"	40-43"
2X	35-37"	45-47"	185-205	71-74"	43-45"
3X	37-39"	46-48"	190-215	71-74"	45-47"
4X	38-40"	47-49"	205-225	71-74"	46-48"
5X	40"+	48"+	225+	71"+	48"+

## FloraVelo Jerseys



- Technical Performance Fabrics** –We insist on using the best...the most comfortable, technical microfiber fabrics with moisture wicking, anti-bacterial, and UV sun protection properties. Just as important, **we incorporate 2 different performance fabrics into every jersey**. The fabric for the front of our jerseys stretches in all directions, providing a great fit and maximum comfort for any figure. The fabric for the back and sides, however, only stretches horizontally around your body. The result ... an extremely comfortable jersey with really functional pockets that don't sag when you fill them up.

**Great Fit** –Our goal is to create favorites. Comfortable, functional clothing **that makes you feel great when you wear it**. Our jersey sizing does not run small like traditional cyclewear - so please choose your size based on your typical size for a comfortable shirt. Most FloraVelo customers fit into two sizes and choose between them based on whether they prefer a snugger or a looser fit.

	XS	S	M	L	XL	2XL	3XL
Bust	31"-33"	33"-35"	35"-37"	37"-39"	39"-41"	41"-43"	43"-45"
Waist	24"-26"	26"-28"	28"-30"	30"-32"	32"-34"	34"-36"	36"-38"
Hips	34"-36"	36"-38"	38"-40"	40"-42"	42"-44"	44"-46"	46"-48"